



SSC's NEWSLETTER

Happenings on the Corner of Permanence and Change

SAM SCHWARTZ PLLC

MARCH/APRIL 2007

ROBOTIC PARKING

"Bot" spots make parking a piece of cake in Chinatown.

By Joshua Knoller

When I drive into the city from New Jersey, parking always comes with a hefty price. If I park on-street, I worry whether or not I'm legally parked. If I park off-street, I worry the parking attendant is going to damage my car. Now if I ever decide to park in Chinatown, I'll use the city's first automated parking garage, which is now open to business at 123 Baxter St. It opened to monthly customers at the beginning of March, but is now open to the average city parker. The garage now serves approximately ten to 12 monthly customers and about 20 to 30 daily customers (out of 67 spots available).

A concept that has been successful in other countries, automated parking has not gone off one-hundred percent according to plan here. An automated garage in Hoboken damaged two vehicles back in 2002.

Ari Milstein, the director of planning for Automotion Inc., and one of the



masterminds behind the system, says that the garage has gotten off to a great start.

"It was a nice smooth transition with a lot of repeat customers," Milstein said. "There were some small issues here and there, nor-

mal start-up issues that come with any normal start-up business."

However, this garage has gotten rave reviews from critics, including Gridlock Sam himself, who went to take a look at the garage on a personal tour back in February, and was assured that steps were taken to ensure no cars get damaged, including extra sensors and lasers to protect the vehicle as well as the consumer.

How the garage works

The driver, that's you, enters through a traditional garage door, parks the vehicle on a pallet inside an "entry and exit room." The driver then uses his "key," typically a credit card, takes a receipt, and walks away. Sensors and lasers scan the room to make sure there is no one inside and to determine if it will fit in the system and where to place the car.

"One woman sat in the car for five minutes not realizing she needed to be out of the room," Milstein

continues on next page...

said.

Once the sensors determine everything is ok to proceed, the pallet with the car on it, which sits on a lift, lowers the vehicle into the system, via computer, similar to a sideways elevator.

When the driver, that's you again, returns, he or she swipes his credit card which initiates the retrieval process. The system, using the credit card information to identify the appropriate vehicle, begins the retrieval process (the same as when your car is lowered into the system, except reversed).

Now let's say you lose your receipt, the key to getting your vehicle back. And since the garage is automatic, no one theoretically needs to be there. Milstein explained how this situation resolves itself.

"If someone loses a ticket, I can pull up the car and resolve the problem," Milstein explained as he was sitting in his hotel room in Southern California monitoring the system via remote log-in. This also works in case there is an emergency.

You could quite conceivably call it robot-valet-parking, but the wave of the future is finally here in the big apple with more to come at prices similar to those of regular garages. Additional automatic garages by the same people who brought to you 123 Baxter St. are planned for 24th St. in Manhattan and in the Bushwick, Williamsburg and Brighton Beach sections of Brooklyn. Stay tuned for more!



Benefits of Automated Parking

The endless search for parking is a burden on the environment, and negatively impacts on quality of life. In a busy city, almost every third driver is looking for a parking spot. The convenience of automated parking is obvious, but some additional benefits include.....

- Increased capacity
- Reduced space
- No ventilation required
- No lighting required
- Enhanced user experience
- Enhanced safety and security



GRIDLOCK TALK



N a m e :
R i c h a r d
W i l n e r

T i t l e :
C o n t r o l l e r /
H R D i r e c t o r

**Place of birth
and year:** Brooklyn, NY 1951

Family: Wife - Fay, Sons - Ryan,
27 and Evan, 25, Daughter -
Jennifer, 19

College: Pace University, BBA in
Accounting

**First job unrelated to account-
ing:** I started working in a
Pharmacy at the age of 13, first
making deliveries, then behind
the counter at age 16.

First job in accounting: After
graduating from college I worked
for a small CPA firm in NYC.

Hobbies: Golf

Favorite novel: The Pillars of the
Earth - Ken Follett

Favorite film: Papillon

Favorite tv show: House

Favorite food: Italian

Keys to success: Staying
focused to achieve my goal

**If you had to choose a different
profession, what would it be:**
Stock Broker/Investment
Advisor

Announcements and Speeches

Jawairia Sial welcomed her newest niece,
Fatima Salman, born on Feb. 6, 2006 at
12:49 a.m. Fatima weighs 15 lbs 10 oz.
Marybeth Miceli has been nominated for
the 2007/2008 Metropolitan Who's Who
Among Executive and Professional Women
in Engineering "Honors Edition" of the
Registry. On March 26th in Orlando, FL,
Marybeth was interviewed and later select-
ed to serve on the National Board of
Directors for the American Society of
Nondestructive Testing (ASNT). **Sam
Schwartz** has been keeping busy again

these past couple months. His speaking
engagements included the Courier Times
where he spoke on "Congestion Pricing"
on Feb. 27. The previous day he spoke at
the Five Borough Blke Club and recently
on a trip to California he spoke at the
Institute of Transportation Engineers about
"Congestion Pricing - Applying Lessons
from London to the United States." And
lets not forget his trip to Germany last
month where Sam was able to continue to
explore the new technology of automated
parking garages.

NEW JOBS

**New York Presbyterian Hospital
Study/Implement Traffic Mitigations,**
PD Dan Plottner, PM Harris Schechtman,
Type: Traffic Engineering/MPT for
Institution.

**Extell Development-Additional Parking
Analysis West 58th Street,** PD Lucien
Linders, PM Harris Schechtman, Type:
Planning for Real Estate Developer.

**Van Wagner - Identity Analyze, Gain
Approval for New MTA Billboard Sites,**
PD Jee Mee Kim, AICP, PM Harris
Schechtman, Type: Permitting for Private
Client.

**NYU Medical Center Traffic
Engineering Services,** PD Erich
Arcement, P.E., PTOE, PM Tom Pagano,
Type: Traffic Engineering/MPT for
Institution.

**MPT for Emergency Repair along FDR
Southbound/63rd Street,** PD Amir
Siddiqui, P.E., PM Shahab Raza, P.E.,
Type: Permitting for Contractors.

SBLM Signal Study, PD Erich Arcement,
P.E., PTOE, PM Ian Sacs, P.E., Type:
Traffic Engineering/MPT for Other Design
Professionals.

Inner-Outer Harbor Traffic Study,
PD/PM Al Meyer, Type: Planning for
Other Design Professionals.

Brooklyn Greenway Phase II, PD Erich
Arcement, P.E., PTOE, PM Doug Adams,
Type: Traffic Engineering/MPT for Private
Client.

**Prospect Park Lakeside Center Ice
Rink,** PD Erich Arcement, P.E., PTOE,
PM Dan Plottner, Type: Traffic
Engineering/MPT for Private Client.

The Caroline Bus Stop, PD/PM Erich
Arcement, P.E., PTOE, Type: Traffic
Engineering/MPT for Real Estate
Developer.

**Thor Shore Parkway Development
LLC,** PD Jee Mee Kim, AICP, PM Lucien
Linders, Type: Planning for Real Estate
Developer.

WOR Parking Systems, PD Samuel
Schwartz, P.E., PM Janet Campbell,
Type: Traffic Engineering/MPT for Private
Client.

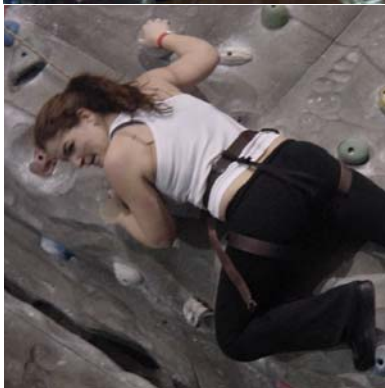
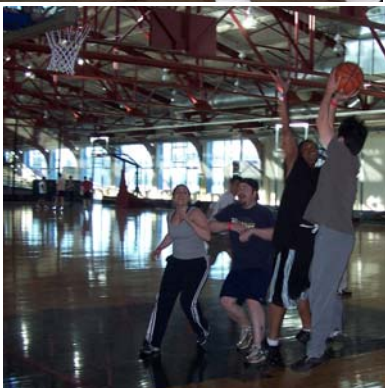
UPCOMING EVENTS

There are plenty of social events coming
up to help kick off the summer for SSC
employees. **The JP Morgan Chase
Corporate Challenge** run will be the first
on June 20. Good luck to all those who
signed up.

SSC's 12th Anniversary Party will be
held at Shea Stadium on Tuesday, July

24th from 7-10 p.m. Everyone is invited
to celebrate another successful year
while watching the Mets vs. Pirates.
Stay tuned for the details of this year's
Company Picnic, which should be
announced soon.

A Day At The Piers With Our Peers



On Friday, February 9 Sam Schwartz PLLC held a day at Chelsea Piers for all employees. The day was filled with volleyball, basketball, rock climbing and plenty of other activities. It was a great day for everyone to relax.

SUDOKU

Each Sudoku has a unique solution that can be reached logically without guessing. Enter digits from 1 to 9 into the blank spaces. Every row must contain one of each digit. So must every column, as must every 3x3 square.

	2	3		8	6	5		
	8	5	3	2	1		6	7
	6						8	2
		6			2	1		
	7		6	1	3		9	
		1	9			7		
	6	4						5
	3	5		2	6	4	9	7
			7	5	9		6	3

